

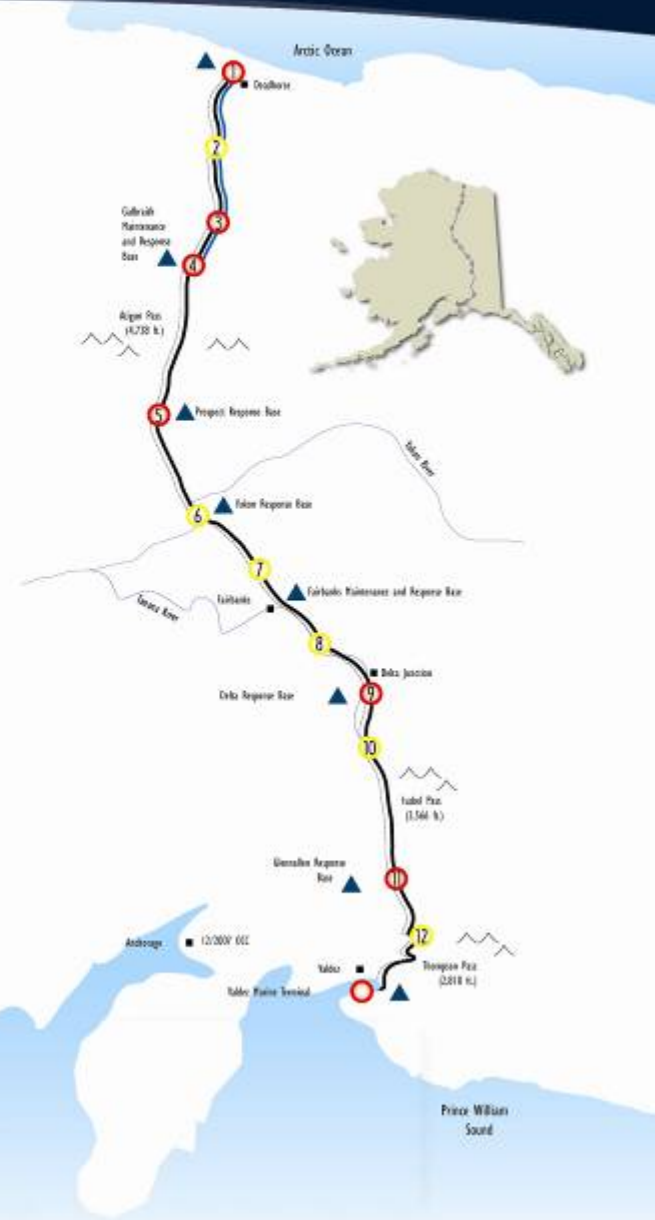


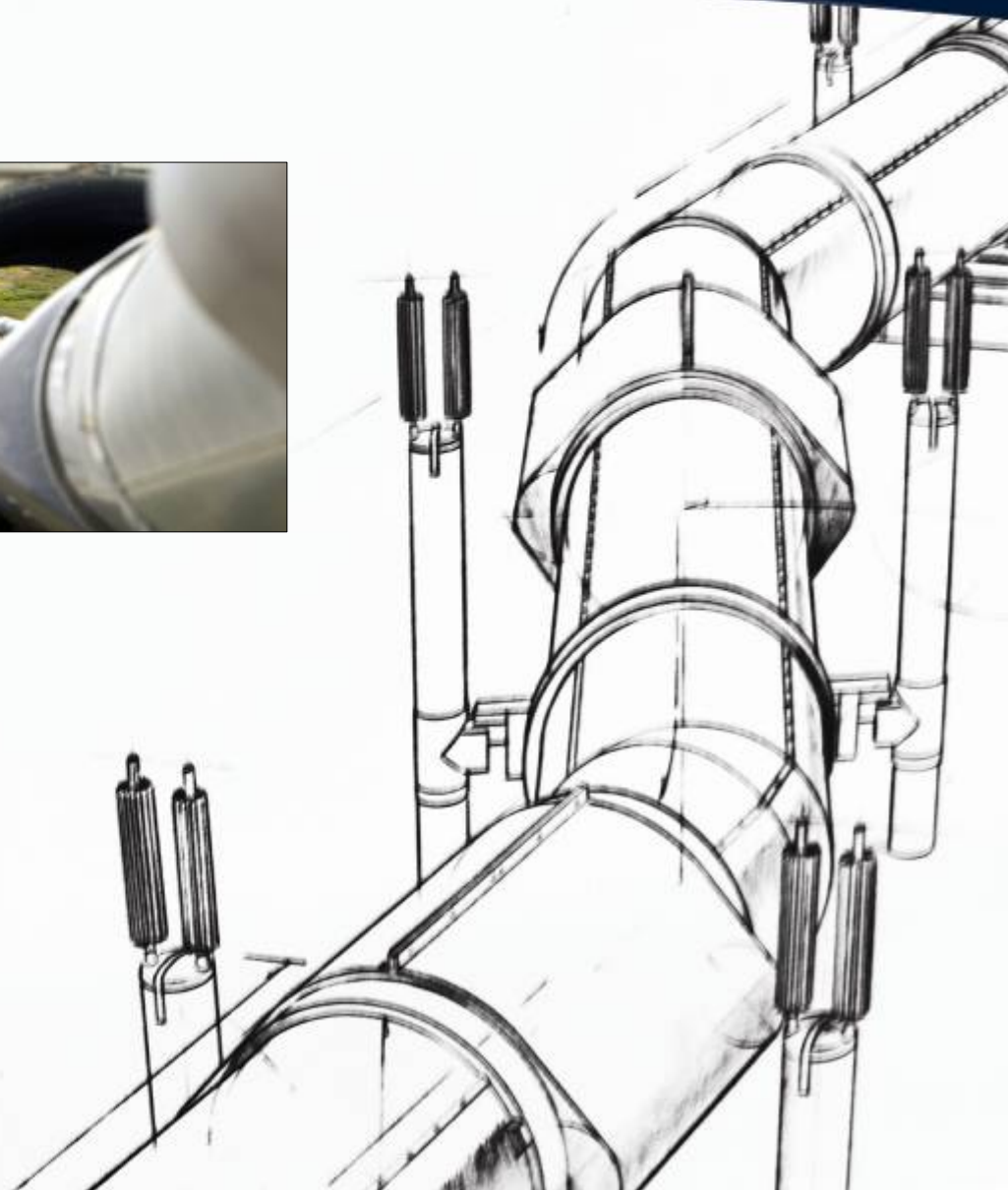
Rod Hanson

Director of Health, Safety,  
Environment, & Quality

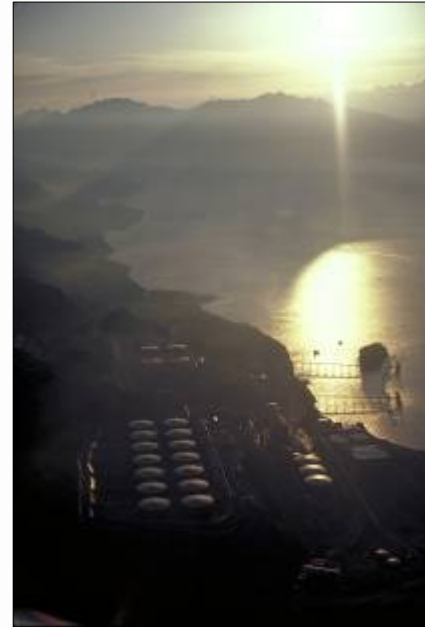
- Trans Alaska Pipeline System (TAPS)  
Overview
- What Distinguishes Alyeska & TAPS?
- Performance

# Alaska North Slope Crude Oil to Market





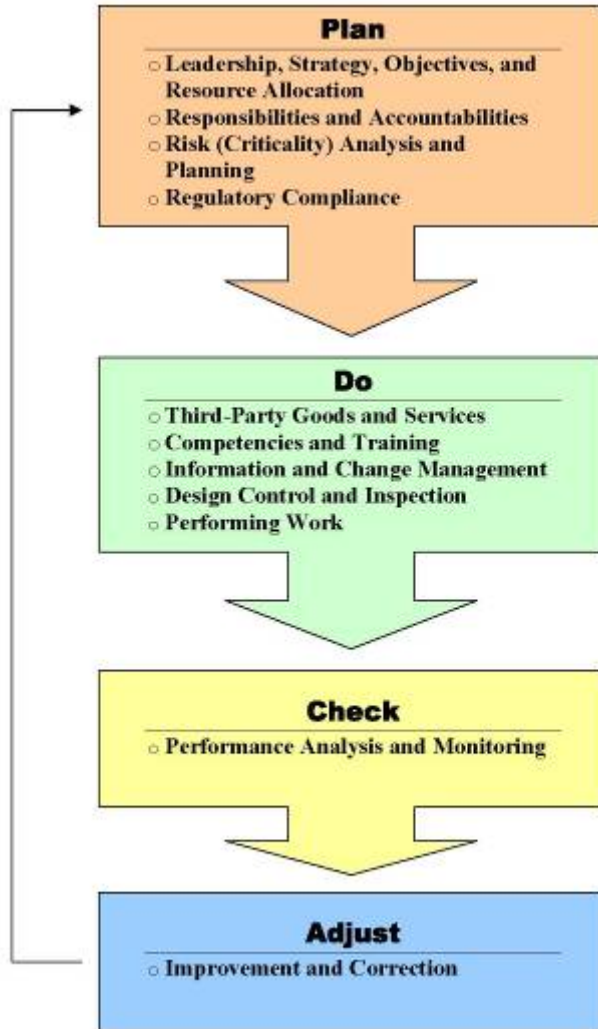
# Valdez Marine Terminal




# Ship Escort & Response Vessel System (SERVS)







### Safe Performance Self Assessment



BEFORE BEGINNING ANY ACTIVITY/TASK/JOB, AFTER A LOSS OR NEAR LOSS, ANY UNUSUAL CIRCUMSTANCES:

**ASSESS** the risk  
What could go wrong?  
What is the worst thing that could happen if something does go wrong?

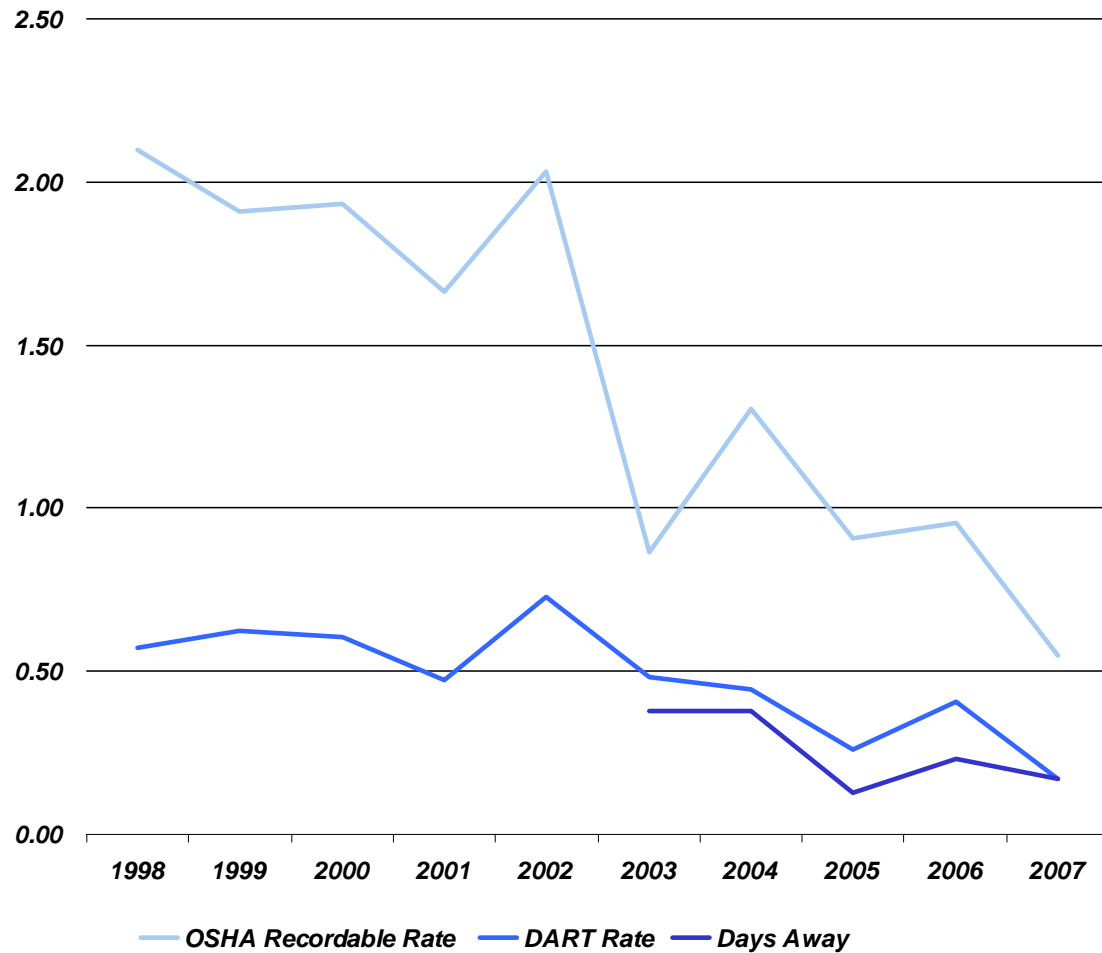
**ANALYZE** how to reduce the risk  
Do I have all the necessary Training and Knowledge to do this job safely?  
Do I have all the proper Tools and Personal Protective Equipment?

**ACT** to ensure safe operations!  
Take necessary Action to ensure the job is done safely!  
Follow written procedures! Ask for assistance, if needed!

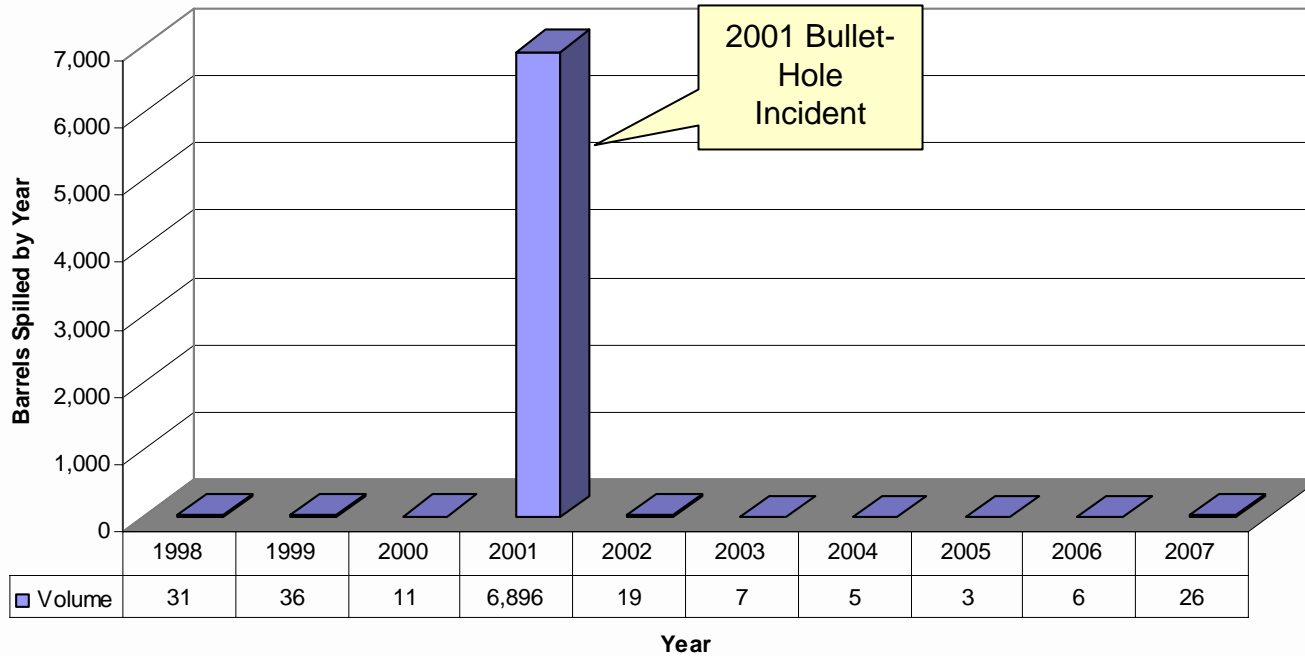
**DO NOT PROCEED UNLESS EVERYTHING IS SAFE!**  
For Everyone • Every Day • All the Time

# Plant (Facilities & ROW)

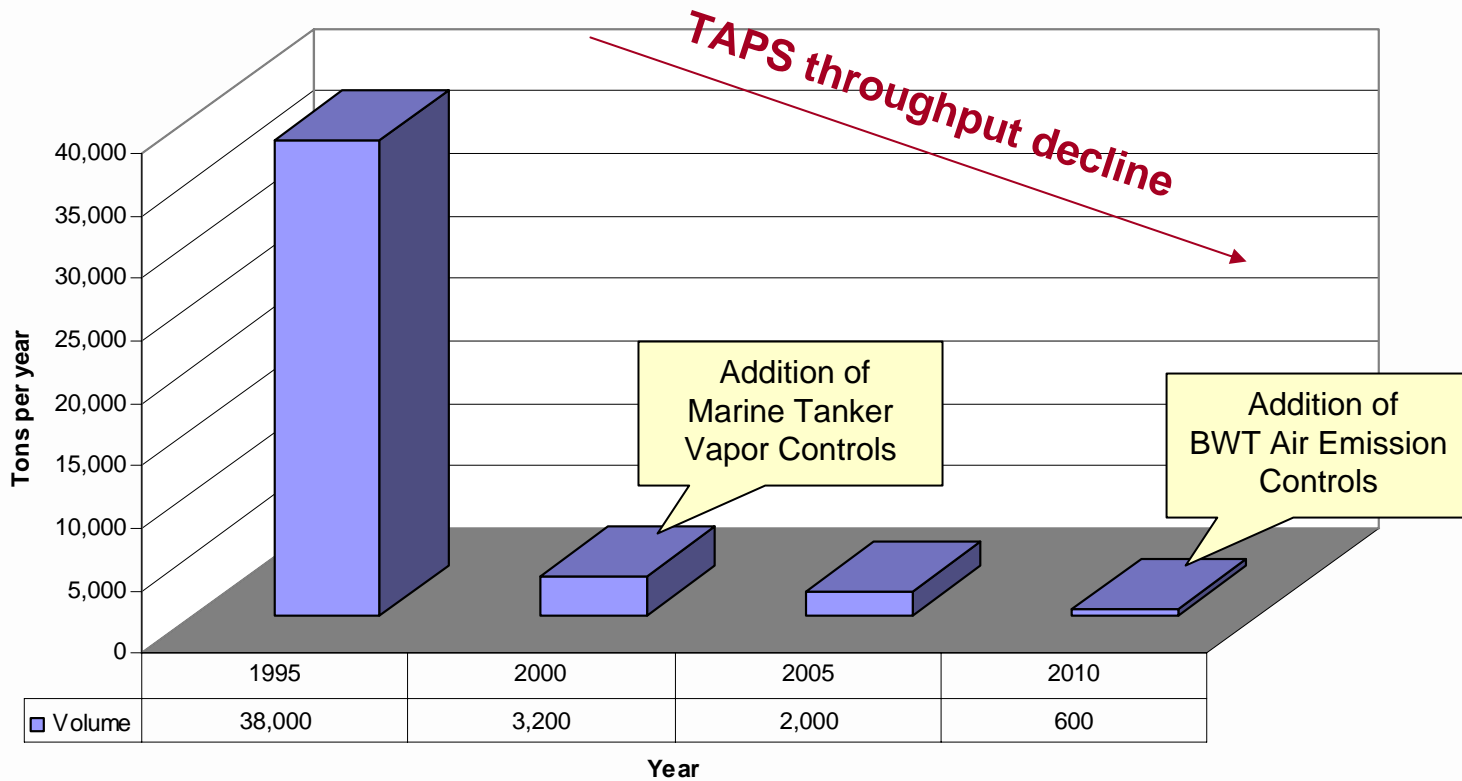




Spill Volume (PC)



VMT VOC Emissions





# The Pipeline People